

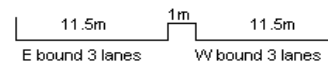
YEAR 2016

COVERAGE (B) STATION 4219

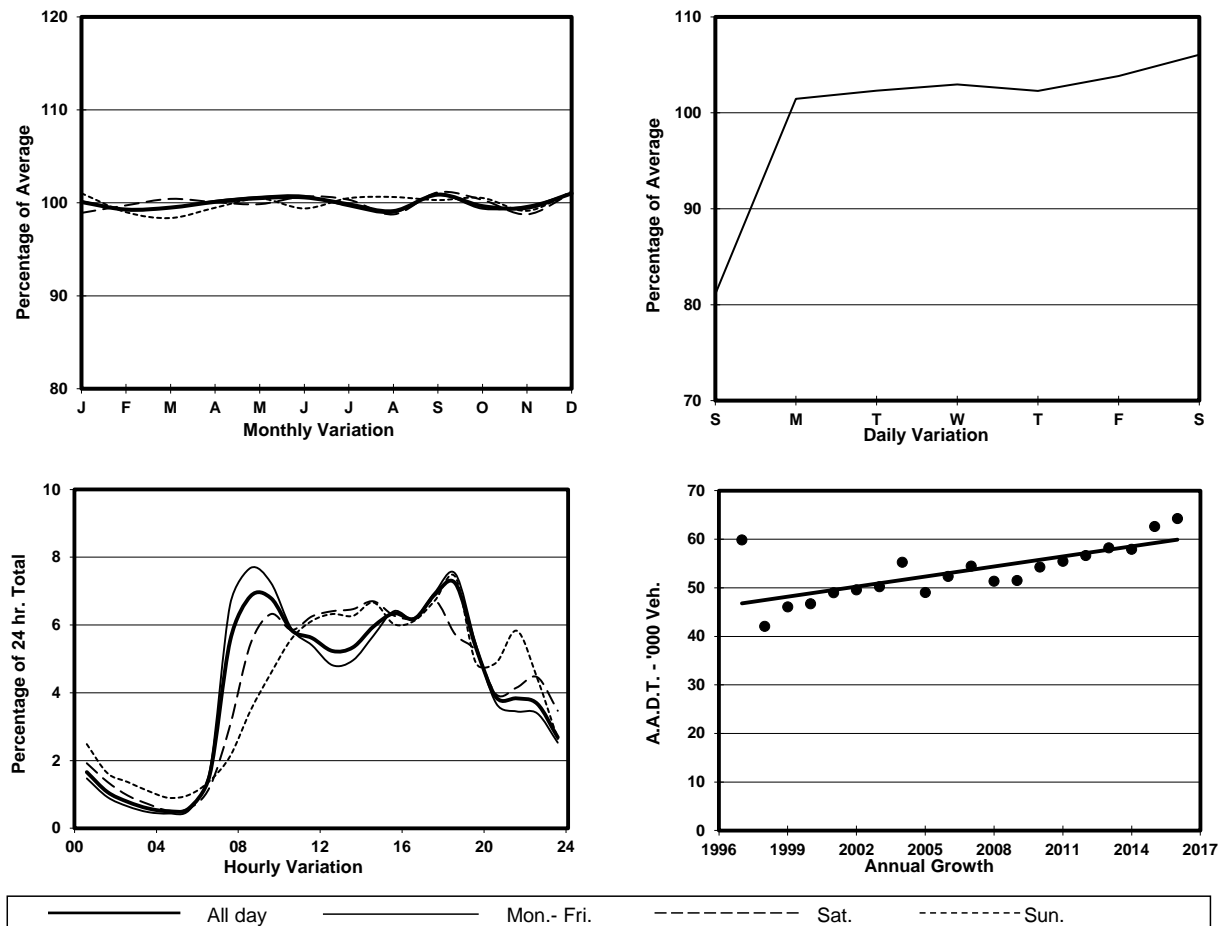
ROAD NETWORK MAJOR

ROAD TYPE EXPRESSWAY

LINK KWUN TONG BYPASS (from KAI YAN ST to LUNG CHEUNG RD)



1. TRAFFIC FLOW VARIATION AND GROWTH



2. TRAFFIC CHARACTERISTICS (BY DIRECTION)

Parameter	All - Day	Mon. - Fri.	Sat.	Sun.
EAST BOUND				
A.A.D.T.	34310	35350	36980	28880
R 12 / 24 - %	73.7	75.5	71.2	66.1
R 16 / 24 - %	90.1	90.9	89.1	86.4
AM Peak Hour	0900-1000	0900-1000	0900-1000	0900-1000
One-way flow at AM peak hour	2630	2950	2630	1220
T - % (AM)	-	10.2	-	-
PM Peak Hour	1800-1900	1800-1900	1600-1700	1800-1900
One-way flow at PM peak hour	2320	2450	2350	2240
T - % (PM)	-	6.7	-	-
Prop.of commercial vehicles - 16 hr.	-	10.6	-	-
WEST BOUND				
A.A.D.T.	29960	31230	31870	23780
R 12 / 24 - %	74	75.2	71.8	69.1
R 16 / 24 - %	91.1	91.8	89.4	88.9
AM Peak Hour	0800-0900	0800-0900	0800-0900	0900-1000
One-way flow at AM peak hour	2020	2320	1780	1200
T - % (AM)	-	9.2	-	-
PM Peak Hour	1700-1800	1700-1800	1700-1800	1800-1900
One-way flow at PM peak hour	2360	2570	2290	1670
T - % (PM)	-	8.5	-	-
Prop.of commercial vehicles - 16 hr.	-	9.2	-	-

3. OTHER INFORMATION AND COMMENT

4. Vehicle classification and occupancy - Monday to Friday

Time		Class of vehicle									
		Motor	Private	Taxi	Private	PLB	Goods veh.		Non	Fr. Bus	
		Cycle	Car		LB		Light	M & H	Fr. Bus	SD	DD
0700-0800	Pro	3.7	54.0	14.4	2.8	1.2	13.7	2.9	4.9	0.0	2.3
	Ocp	1.1	1.5	1.9	9.2	12.4	1.5	1.1	20.1	0.0	72.4
0800-0900	Pro	3.4	59.8	12.6	1.3	1.1	12.4	3.9	2.3	0.1	3.1
	Ocp	1.0	1.2	2.1	8.2	12.5	1.4	1.1	32.9	1.0	65.5
0900-1000	Pro	2.0	50.0	13.5	0.5	1.2	22.7	7.2	0.6	0.0	2.3
	Ocp	1.0	1.4	1.9	2.8	7.5	1.4	1.2	17.6	0.0	31.9
1000-1100	Pro	1.4	45.4	12.0	1.0	1.2	28.1	7.8	0.9	0.0	2.2
	Ocp	1.2	1.2	2.0	1.9	6.0	1.5	1.3	14.4	0.0	35.5
1100-1200	Pro	2.0	43.8	13.4	0.7	1.3	27.2	7.9	1.6	0.0	2.0
	Ocp	1.1	1.3	1.6	1.7	6.4	1.5	1.3	9.3	0.0	35.9
1200-1300	Pro	2.5	44.9	14.0	1.6	1.0	21.9	10.6	1.7	0.0	1.8
	Ocp	1.1	1.4	2.2	6.7	9.7	1.6	1.3	15.7	0.0	40.0
1300-1400	Pro	3.1	46.9	14.2	0.7	1.6	19.9	9.3	1.8	0.0	2.4
	Ocp	1.1	1.3	1.9	7.8	9.3	1.5	1.2	9.5	0.0	44.2
1400-1500	Pro	1.7	42.5	13.5	0.7	0.9	26.2	10.7	1.7	0.0	2.1
	Ocp	1.1	1.4	2.1	1.7	8.6	1.4	1.2	10.9	0.0	42.2
1500-1600	Pro	2.7	43.6	12.5	1.8	1.0	26.5	7.7	2.4	0.0	1.8
	Ocp	1.0	1.2	1.8	6.8	9.8	1.4	1.2	13.1	0.0	37.4
1600-1700	Pro	2.2	47.5	12.7	1.5	1.1	23.1	8.2	1.7	0.0	2.0
	Ocp	1.1	1.3	2.0	2.8	9.4	1.6	1.2	7.7	0.0	44.3
1700-1800	Pro	4.8	50.5	11.1	0.9	1.1	22.1	5.5	1.7	0.0	2.3
	Ocp	1.1	1.5	2.0	2.5	13.4	1.6	1.2	11.9	0.0	50.9
1800-1900	Pro	4.1	67.1	10.2	0.4	0.9	10.9	2.8	1.2	0.0	2.5
	Ocp	1.1	1.4	2.0	1.4	11.4	1.4	1.3	10.7	0.0	67.4
1900-2000	Pro	2.5	70.4	10.9	0.2	1.2	7.4	2.5	1.6	0.0	3.1
	Ocp	1.1	1.3	2.1	1.0	10.3	1.7	1.3	13.1	0.0	57.6
2000-2100	Pro	2.8	67.0	15.8	0.0	1.2	6.8	2.0	1.1	0.0	3.3
	Ocp	1.1	1.6	1.9	0.0	4.8	1.5	1.0	4.1	0.0	45.6
2100-2200	Pro	2.4	62.6	20.9	0.0	1.8	7.1	0.9	0.5	0.0	3.8
	Ocp	1.2	1.3	2.0	0.0	10.1	1.6	1.0	1.7	0.0	42.7
2200-2300	Pro	5.2	60.2	22.2	0.0	1.5	5.9	0.8	0.4	0.0	3.9
	Ocp	1.3	1.4	2.2	0.0	9.0	1.5	1.0	11.0	0.0	49.1
16 hours	Pro	2.9	53.5	13.4	1.0	1.2	18.1	5.8	1.7	0.1	2.5
	Ocp	1.1	1.4	2.0	5.5	9.6	1.5	1.2	15.7	1.0	49.8

Legend

Pro. Proportion of vehicles in % (Sum may not add up to 100% due to figure rounding)*

Ocp. Average occupancy of vehicles including both driver and passengers*

M&H Medium and Heavy

***** All traffic data are collected from combined bounds except for one way traffic